

# Lockers and Cupboards

PERSONAL STORAGE SOLUTIONS



## Contents

- 3** Locker Features
- 4** Accessories
- 5** Full height lockers
  - Three-quarter height lockers
  - Half height lockers
  - Colour Options
  - Door Options
  - Lock Options
  - Quarto lockers
  - Sixto lockers
  - Cube lockers
- 9** Locker Room Design
- 10** Utility Lockers
  - Crew Lockers
- 12** Medium Duty Lockers
- 13** Stronghold Heavy Duty Lockers
- 14** Garment Dispensers
- 15** Laptop Lockers
  - Personal Item Lockers
  - Post Lockers
- 16** Laminate Door Lockers
- 17** Wooden Door Lockers
- 18** Aluminium Laminate Door Lockers
- 19** Seating and Benching
- 20** Security & Standard Cupboards
- 21** Slim, Large Volume, Vision and Storage Cupboards
- 22** Tool Cabinets
- 23** Hazardous Substance Cupboards

# Delivering the right solution for you

## **Moresecure lockers and cupboards are designed and manufactured to a high specification to meet any personal storage requirements.**

They are built for a long efficient working life in factories, hospitals, schools, colleges, retail outlets - in fact anywhere needing tough, reliable and aesthetic storage. Their modular design makes these lockers and cupboards extremely adaptable and cost effective. Units can be specified from a wide range with a choice of locks, doors, colours and accessories, allowing lockers and cupboards to be tailored to a customers precise needs.

Our experience and expertise has enabled us to put together a proven product range, designed to conform to BS 4680 standards and manufactured in the UK to internationally recognised quality and environmental ISO standards. This reflects our commitment to producing the best products whilst reducing environmental impact in the design and manufacturing process.

### **Free site visit and design**

We will gladly come and discuss your requirements and help you plan your locker or cupboard needs. We will survey the room or area and produce a layout for your approval. Installation, if required, is undertaken by our appointed fitters, who ensure your job is installed to your satisfaction with the minimum of disruption and mess.



# Proven Products



## Robust Design

- All doors have an all-round reinforcing edge, spot-welded at each corner to enhance strength and rigidity.
- A welded vertical channel section stiffens the door for protection against impact damage.
- Steel three-knuckle hinges are welded to the door and riveted to the frame to give added strength and allow for easy replacement of damaged doors.
- Complying with BS 4680, a close fit between the door and the frame of less than 2mm protects against leverage in attempted forced entry.
- Colours are applied electro-statically as an epoxy-polyester powder coat, then baked to provide a high quality, durable finish.



## Integral Security

### Locking

- Features in-frame locking through the door with a hooked cam engaging into the frame.
- This provides extra security by significantly increasing resistance to forced entry.



### Anti-theft shelf

- The design of the intermediate shelf prevents access to compartments above and below an open door.



### Lock plate

- The lock cover plate and handle provides recesses to accept compartment numbering or identification.



## BS 4680 - the standard for clothes lockers



Our standard duty lockers have been tested and conform to the requirements of the British Standard for Clothes Lockers BS 4680: 1996 'Standard Duty'.

## BioCote® - bacteria locked out

- BioCote® antimicrobial technology is incorporated into all Moresecure lockers and cupboards at the time of manufacture, offering constant protection against a wide range of bacteria.
- Field tests prove that storage equipment treated with BioCote® powder coating benefits from a 94% reduction in bacteria on their surface, helping create a cleaner and more hygienic working environment.



# Accessories for tailored solutions



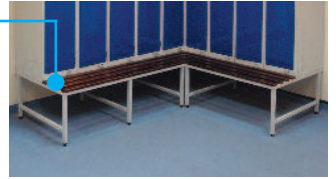
## Sloping Tops for lockers

Sloping tops are essential in hygiene-sensitive locations such as hospitals and the food industry. The 22 degree slope prevents litter being left on locker tops and makes cleaning easier.

Dimensions mm	
Locker Depth	Top Height
300	125
380	158
450	187
500	207
550	228
600	240

## Support Frame with seat

Seat units are incorporated into the locker frame as well as slatted seats to the front. They can include a mesh shelf for footwear. Standard height is 400mm to match freestanding bench seating units.



## Bridge Unit for Modular Lockers

### Bridge Unit Top

This is fitted to adjacent lockers with nuts & bolts supplied. Incorporates a central full-length hanging rail with the option of 'captive' clothes hangers which cannot be removed, thereby preventing theft and accidental loss.

Height - 60mm	
Widths mm	Depths mm
600	300
900	450
1200	500
	550

### Bridge Unit Base

A free-standing rack to support footwear or other items 150mm above the floor.



## Support Frame

Locker support frames and seat units raise lockers off the floor, reducing impact damage and making cleaning easier. Support frames are manufactured from 25mm square steel tube in a welded construction and are painted light grey as standard to match the lockers. Standard height is 150mm, and widths and depths are designed to match the locker installation.



# Colours and Finishes

## BioCote® Paint Finish

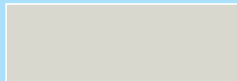
Epoxy-polyester powder coat colours with BioCote® protection.

Standard Body colour is Light Grey (RAL 7035)



Light Grey (RAL 7035)

### Standard Door Colours



Light Grey (RAL 7035)



Red (RAL 3020)



Blue (RAL 5002)



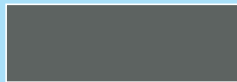
Green (RAL 6001)



Carmine Red (RAL 3002)



Yellow (RAL 1003)



Dark Grey (BS 00A11)



Burgundy (RAL 3003)



Black (RAL 9005)



Electric Blue (BS 20 E 51)

### Pastel Door Colours



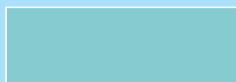
Sunburst Yellow (BS 10 E 50)



Candy Pink (BS 02 C33)



Light Violet (BS 381 C 797)



Turquoise (RAL 6034)

Note: due to the limitations of matching painted steel to the printing process, colours illustrated on this page offer a good, but approximate guide. For exact colour reference, painted steel samples are available upon request.

# Mild Steel Modular

## Full Height



### Single-Door

#### Internal fittings:

- Fixed top shelf.
- Fixed garment hanging rail (except 300mm deep).
- Two coat hooks.

Height - 1800mm	
Widths mm	Depths mm
225	300
300	380
380	450
450	500
	550
	600



### Two-Door

#### Internal fittings:

- One intermediate fixed shelf.
- Each compartment has a fixed garment hanging rail (except for 300mm deep).
- Each compartment has two coat hooks.

Height - 1800mm	
Widths mm	Depths mm
225	300
300	380
380	450
450	500
	550
	600

## Door Options

You can choose from a variety of door styles to tailor the locker to your specific situation.



### Standard Duty Door

This flat mild steel door fits flush within the door frame – less than 2mm between door and frame (for compliance with BS 4680) to protect against leverage in attempted forced entry.



### Perforated Door

Particularly useful where damp clothes and odours pose a problem.



### Vision Door

Incorporates a toughened polycarbonate view panel set within a steel door with an all-round strengthened edge - allows you to see items stored in locker compartments without compromising security.

# lockers for maximum versatility



### Three-Door

**Internal fittings:**

- Two intermediate fixed shelves.



### Four-Door

**Internal fittings:**

- Three intermediate fixed shelves.



### Five-Door

**Internal fittings:**

- Four intermediate fixed shelves.



### Six-Door

**Internal fittings:**

- Five intermediate fixed shelves.

Height - 1800mm	
Widths mm	Depths mm
225	300
300	380
380	450
450	500
	550
	600

Height - 1800mm	
Widths mm	Depths mm
225	300
300	380
380	450
450	500
	550
	600

Height - 1800mm	
Widths mm	Depths mm
225	300
380	380
450	450
	500

Height - 1800mm	
Widths mm	Depths mm
225	300
300	380
380	450
450	500
	550
	600



**Insight Door**  
 These shatter proof polycarbonate doors allow 100% visibility while maintaining the highest level of security.

## Lock Options



**Standard Deadlock**  
 This simple and economical cam lock provides user access with a small, easily replaced key. The lock is supplied with two keys and a master key is available.



**Hasp & Staple Padlock Fitting**  
 Transfers responsibility for locking to the user. The user is required to secure the locker with a padlock (not supplied). This system provides flexibility at the loss of some control over allocation of lockers.

## Three Quarter Height

## Half Height



### Single-Door

#### Internal fittings:

- Compartment has a fixed garment hanging rail with two coat hooks.



### Three-Door

#### Internal fittings:

- Two intermediate fixed shelves.



### Single-Door

#### Internal fittings:

- Compartment has a fixed garment hanging rail with two coat hooks.



### Two-Door

#### Internal fittings:

- One intermediate fixed shelf.

Height - 1382mm	
Widths mm	Depths mm
225	300
300	380
380	450
450	500
	550
	600

Height - 1382mm	
Widths mm	Depths mm
225	300
300	380
380	450
450	500
	550
	600

Height - 900mm	
Widths mm	Depths mm
225	300
300	380
380	450
450	500
	550
	600

Height - 900mm	
Widths mm	Depths mm
225	300
300	380
380	450
450	500
	550
	600



#### Coin/Token Return Lock

Ideal when lockers have 'shared' users. The key is released when coin (£/€) or token is inserted. Key is captive again when the door is reopened and the coin/token is returned to the user.



#### Mastered Combination Lock

Provides a keyless system for a single user. Turning the tumbler to each of the number settings releases the lock. Supplied with combination number, instructions and override master key.



#### Multi-user Combination Lock

Ideal for facilities where keys are not desirable. The lock can be reset whenever it is open. This allows the locker to be used by several people at different times throughout the day, reducing the number of locker compartments required and the need for keys.



#### Coin/Token Retain Lock

Generates revenue from 'shared' user lockers. The key is released when coin (£/€) or token is inserted. Key is captive again when the door is reopened. Coin/token is retained in the box.



#### Digital Combination Lock

Simple-to-use, battery-operated keyless lock. Can be programmed for dedicated single-user or multi-user 'open access' mode. Personal entry code can be set and changed, whilst a preset master code ensures supervisor access.



#### Magnetic Catch Lock

For use in Primary schools or environments where risk of key loss is high and security minimal. Offers positive closure of the door.

# Small Modular lockers

## Quarto

## Sixto

## Cube



### Three-Door

**Internal fittings:**

- Two intermediate fixed shelves.

Quarto and Sixto lockers can be stacked, their modular design also allowing them to be used with standard lockers

Cubes - as the name suggests - have an equal height, width and depth allowing combined stacking of units on the floor or on support frames.

Height - 900mm	
Widths mm	Depths mm
225	300
300	380
380	450
450	500
	550
	600

Height - 511mm	
Widths mm	Depths mm
225	300
300	380
380	450
450	500
	550

Height - 372mm	
Widths mm	Depths mm
225	300
300	380
380	450
450	500
	550

Heights - 300, 380 or 450mm	
Widths mm	Depths mm
300	300
380	380
450	450



Full height lockers with Sixto lockers for additional under-seat storage.

Quarto and Sixto lockers can be fitted on top of lockers to increase available storage height with additional compartments.



Cube lockers are ideal for stacking, creating banks of individual compartments.

# Locker Room Design

## Features of the locker room

The size, location, fixtures & fittings of the area or room designated for the lockers will affect the positioning and layout of the lockers. Take into account the following:

- Is the room or area large enough to accommodate the number (and size) of lockers required, whilst still leaving enough space for users to have easy access?

*Note:* ensure that the space is not confined, making the lockers awkward or uncomfortable to use, and the room potentially hazardous in an emergency evacuation situation (in response to a fire alarm, for example).

- Is the room or area accessible to groups of people who may all arrive at one time? Are any adjacent corridors, stairs or lifts easy to get to and move through? Is the room readily accessible for delivery and installation of the lockers?
- Take into account the position of doors and windows and their effect on the locker layout.

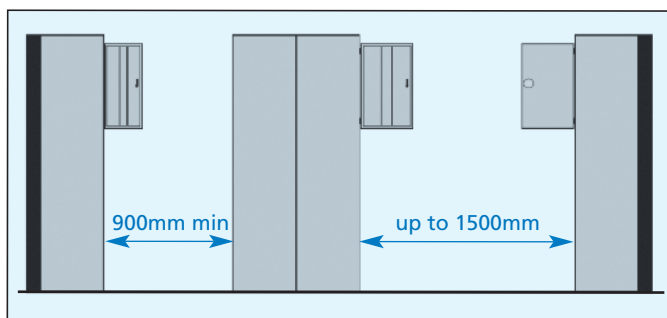
*Note:* the position of fixtures and fittings which could either obstruct the lockers or be obstructed by them. For example: ceiling pillars, low ceilings, alcoves, beams, skirting boards, radiators & heating pipes, light switches, sockets and other power outlets, lighting fixtures, ventilators and air-conditioning units, any access to service points.

- Check the condition of the floor - What is it made of? Is the surface suitable and in good condition? Is it level: lockers should always be located on a level, even floor. If there is significant slope, consider locating the lockers on support frames with adjustable feet.
- How are the floors cleaned? Even in a generally 'dry' changing area, the floor may be washed or mopped down from time to time. Where floors may be left damp for some time and on a regular basis, consider raising the lockers from the floor on a support frame which has a protective finish against corrosion.
- Assess the lighting - ill-lit locker rooms can appear oppressive and unwelcoming. Carefully assess the positioning of lockers and their effect on lighting - avoid creating areas of dark or shadow in the room, particularly in corners. If there is natural light, make the best use of it. How is the artificial light provided? Will it conflict with the locker layout? If so, can the lighting be altered or the locker layout changed?

## Locker Run Spacing

Lockers standing on the floor should be positioned so that there is a clear space or aisle at least 900mm wide - but preferably 1000mm - between the locker fronts and the opposing fixture - this could be a parallel run of lockers, or a corridor wall. Always allow clearance for wide-open doors - this varies according to the locker width.

Where space is available, the width of the aisle can be increased up to 1500mm where facing lockers are likely to be used simultaneously.



Lockers standing on support frames fitted with a seat should have a minimum aisle width of 900-1000mm between seats, but a spacing of 1200mm is desirable if facing lockers are to be used simultaneously.

## Requirements for usage

**Consider the following at the initial planning stage:**

- How many people in all have a requirement for a locker?
- Do people require their own personal locker or can the lockers be shared? - for example, to cater for shift workers
- When will the lockers be used? - are they required on a regular daily basis, or infrequently?
- Accessibility: what would be the maximum number of people requiring access to the lockers at any one time? - is additional space required to prevent overcrowding at 'peak times' - during the the changeover of work shifts, for example
- What kinds of items of clothing, equipment, personal possessions or carrying bags will users bring into the locker room? This will help determine the size of compartment/s required and also the locker and floor spacing - for example, where bulky clothing or equipment is involved, more floor space may be necessary for ease of movement
- What kind of access and 'ownership' is required for the lockers? This will influence the type of lock used: where an individual has their own locker, a cam-lock or padlock can be fitted, operated by the owner's key; where lockers are for shared use, coin or token-operated locks may be preferred as easier to administer
- What degree of privacy is appropriate? - people may need to change their clothes, in part or in full
- Is there a requirement for seating?
- Is there a requirement for 'shared' clothes hanging facilities within the locker room?

## Locker Nesting

Lockers are supplied as nested units - lockers of the same overall dimensions, sharing common side panels, manufactured and supplied fitted together.

This saves on the steel used, giving you the most economical solution.



Initial locker  
Nest of 1

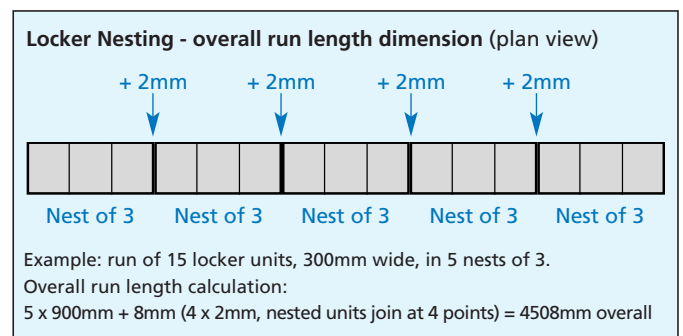
Nest of 2 lockers

Nest of 3 lockers

## Overall Dimensions

When planning a locker room layout, allowance should also be made for the incremental increase in the overall length of locker runs, where nested units are butted together.

2mm is added to the overall length at each point where two nested units join together (refer to example illustrated, below).



# Utility Lockers

## Utility



### Uniform Locker

**Internal fittings:**

- Fixed top shelf.
- Central divider.
- Hanging rail and hook.
- Three fixed shelves.

Height - 1800mm	
Width mm	Depth mm
450	450



### Clean & Dirty Locker

**Internal fittings:**

- Fixed top shelf.
- Central divider.
- Both divided compartments have a garment hanging rail and coat hook.

Height - 1800mm	
Width mm	Depth mm
450	450



### Two Person Locker

**Internal fittings:**

- Users have a three quarter length compartment with a separate full width compartment opened with the same key.
- Hanging compartment has two coat hooks.

Height - 1800mm	
Width mm	Depth mm
450	450

- Also available sloping tops, see page 4.
- Choice of door colours, see page 5.
- Fitted with Deadlock as standard. Optional locks, see page 6 for details.



## Police

We also offer a variety of Police locker solutions. From the storage of 'Airwave' radios to PSU bags we have the right solution for Police forces throughout the UK.

Height - 1800mm	
Width mm	Depth mm
450	600
600	600

## Crew



### Work Wear Locker

#### Internal fittings:

- Top shelf, divided compartment below, with one fixed shelf and hanging rail to either side.

Height - 1800mm	
Width mm	Depth mm
380	450



### Two compartment

#### Internal fittings:

- Fixed heavy-duty top shelf.
- The hanging compartment has a heavy duty hanging rail.

Height - 1800mm	
Width mm	Depth mm
450	600
600	600



### Four compartment

#### Internal fittings:

- Fixed heavy duty top and lower shelves.
- Divided compartments.
- Heavy duty hanging rail.

Height - 1800mm	
Width mm	Depth mm
600	600



### Police Locker with:

- Lockable cube on door with clear perspex front



### Police Locker with:

- Airwaves compartment
- CS Cannister holder



### Police Locker with:

- CS Cannister holder



# Medium Duty Lockers

The medium duty design raises the standard duty ranges to a higher level of protection.

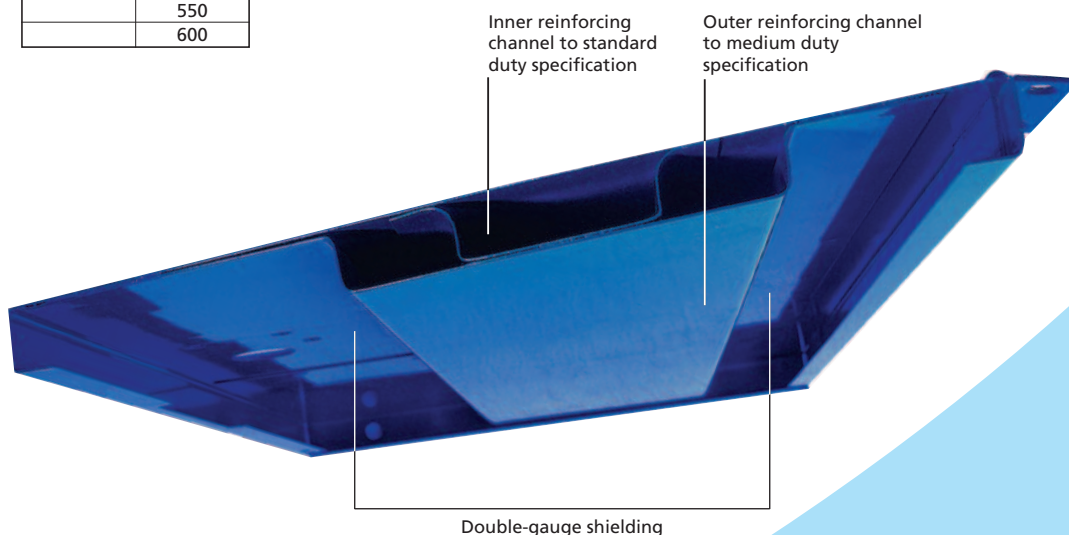
Enhancing the already robust design of the Standard Duty steel locker, the uprated medium duty versions have an additional vertical reinforcement channel and a shielded front of double-gauge steel for triple thickness protection.

This toughened design provides additional defence against the twin problems of vandalism and theft.

- Second channel section welded to the inside of the door to provide triple thickness strength.
- This significantly increases the reinforced area of the door's width and height and makes the door extremely difficult to deform, providing additional protection against forced entry.
- The form of the of the channel is extended across both sides of the door it doubles the gauge of the steel to resist impact damage.
- Also available sloping tops, see page 4.
- Choice of door colours, see page 5.
- Fitted with Deadlock as standard. Optional locks, see page 6 for details.



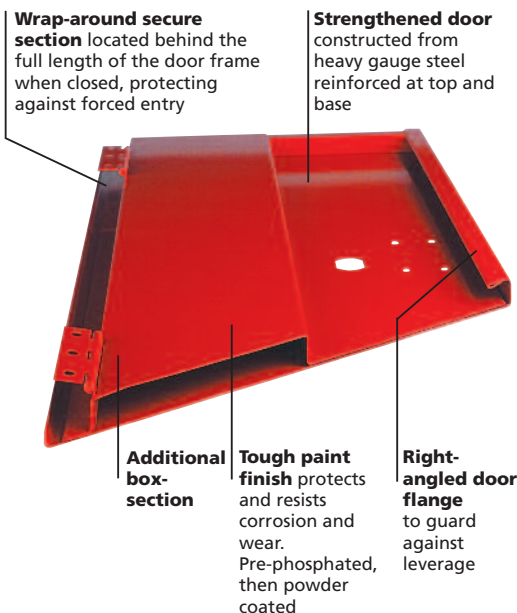
Height - 1800mm	
Widths mm	Depths mm
300	300
380	380
450	450
	500
	550
	600



# Stronghold Heavy Duty Lockers

Combining robust design with a heavy gauge 'double skin' door to guard against leverage and impact, Stronghold lockers are hard to beat when it comes to long-lasting security.

- Heavy-duty 5-knuckle hinge welded to the door, but rivetted to the frame to allow for easy replacement.
  - Single compartment lockers, fitted with hat shelf and hanging rail with double coat hook as standard.
  - Two compartment lockers have double coat hook in each compartment.
  - Choice of door colours, see page 5.
  - Fitted with Deadlock as standard.
- Optional locks.  
 Hasp & staple fitting (for use with own padlock).  
 Coin/token operated locks.  
 See page 6 for details.



Two Door

Three Door

Four Door

Six Door

Single Door

Height - 1778mm	
Width mm	Depths mm
305	305
	457

# Garment Dispensers and Collectors

The managed issue of workplace clothing - often via third party laundries - is an essential part of hygiene procedure in many sectors. Integral BioCote protection (see page 3) on all our garment issue lockers provides a valuable additional benefit to these industries.

- Also available sloping tops, see page 4.
- Choice of door colours, see page 5.
- Fitted with Deadlock, with 2 keys.



Designed initially for work wear, these lockers are equally suitable for the controlled issue of safety equipment, consumables or specific materials required for a working day or shift.

### Individual Access

Garment issue lockers provide each worker with key access to their secure compartment to collect a freshly laundered issue of clothing. Compartment doors are inset within the main full-height door, which remains locked.

### Convenient Re-supply

The full-height main door allows access to all of the individual compartments for re-stocking with laundered clothing.

### Laundry Collection

Workers 'post' their used garments into an adjacent Collection locker. These are collected in a laundry bag (not supplied with lockers). This separation of clean and used items can make a major contribution to maintaining a hygienic working environment.



10-Door Dispenser  
15-Door Dispenser

### Collector

- Full-height door.
- Galvanised anti-theft shelf, angled inside 'post slot'.
- Hooks for laundry collection sack (sack not included).



5-Door Dispenser



20-Door Dispenser

### 5-Door Collector & Dispenser

- Half-height upper 'issue' door with 5 compartments.
- Lower 'collector' door with 'post slot'.
- Hooks for laundry collection sack (sack not included).



# Laptop Lockers

These purpose-designed locker units provide a safe sanctuary for laptops and real peace of mind for users.

- 15 compartment locker has each door reinforced fitted with its own key-operated cam lock ('dead locking').
  - Single door locker version allows access to all compartments under one key.
  - 15 compartment lockers accept laptops WITHOUT carry cases.
  - Laptop lockers are available with optional hardwiring for power and networking, allowing computers to be recharged while being stored.
  - Also available sloping tops, see page 4.
  - Choice of door colours, see page 5.
  - Fitted with Deadlock as standard.
- Optional locks.
- Hasp & staple fitting (for use with own padlock)
  - Digital combination lock (4 door only).
  - Coin return lock (4 door only).
- See page 6 for details.



## Single-Door Locker

Compartment size  
● 90h x 285w x 425d mm

Height - 1778mm	
Width mm	Depth mm
381	457



## Fifteen-Door Locker

Compartment size  
● 90h x 285w x 425d mm

Height - 1778mm	
Width mm	Depth mm
381	457



Also available, optional factory fitted, full-height protective steel channel kit to cover all locks. Requires padlock.

# Personal Item Lockers

Personal item lockers provide secure storage for small but valuable possessions in public areas and throughout the working environment.

- Choose from 4 or 8 doors in nests of 1 or 2.
  - Units can be hung on walls, fitted on top of each other or side to side.
  - Choice of door colours, see page 5.
  - Fitted with Deadlock as standard.
- Optional locks.

Hasp & staple fitting (for use with own padlock).  
Digital combination lock (4 door only).  
Coin return lock (4 door only).  
See page 6 for details.



Height - 915mm*	
Width mm	Depth mm
250	155

\*Height rises to 975mm with sloping top.



Perforated Door



Plain Door

# Post Lockers

- Allows sorted mail to be posted into secure compartments which are opened on the recipients key.
- 10 or 15 tier lockers.
- Individual doors are set within a main door, which is opened on its own key giving access to all of the interior.
- Choice of door colours, see page 5.
- Fitted with Deadlock, with 2 keys.



Height - 1800mm	
Width mm	Depth mm
381	457

# Laminate Door Lockers

Combines the versatility of steel lockers with the durability of solid grade laminate doors.

- Solid grade laminate material offers a robust, elegant solution with a range of colours and material designs, to satisfy all requirements.
- Choice of door styles.
- Plant-on doors cover the front face of the locker carcass creating a wall of colour.
- Inset doors offer a full-length hinge to provide continuous support for the door and provides a visual contrast between the door finish and the locker frame.
- Fitted with Deadlock as standard. Optional locks. Digital combination lock. Coin/token operated locks. See page 6 for details.



**Three Door Locker with Inset Doors & Sloping Top**



**Two Door Locker with Plant-On Doors**

- Two compartment lockers fitted with double coat hook in each compartment.

Height - 1800mm	
Widths mm	Depths mm
225	300
300	450
380	500
450	550
	600



**Four Door Locker with Inset Doors**

# Wooden Door Lockers

## Standard Solid Grade Laminate

Laminate doors are available in a wide range of finishes and colours, some of which are shown below.

### Flat Door Finish



White Yellow



Red Light Green



Mid Green Light Blue

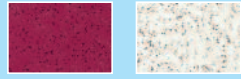


Mid Blue Dark Blue

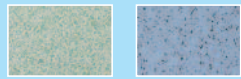


Grey

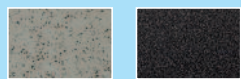
### Speckled Door Finish



Rose White



Green Blue

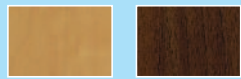


Grey Black

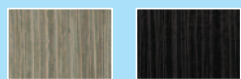


Caviar

### Wood Finish



Apple Beech



Light Banian Dark Banian

Other colours and finishes are available to match specific requirements. Ask for details.

Due to the nature of printed colour reproduction colours may vary from actual finish.



Height - 1800mm	
Width mm	Depths mm
300	450
380	

Wooden Door Lockers combine the strength and durability of steel lockers with the aesthetic appearance of wooden lockers.

Wooden door lockers provide an economical alternative to all wooden facilities, providing a clean, professional finished line presenting an all wood front. Matching end panels ensure the finished installation has a quality 'all wood' effect.

- Attractive profiled doors.
  - Concealed self closing hinges.
  - Fitted with Deadlock as standard. Optional locks.
    - Digital combination lock.
    - Padlock fitting.
    - Coin/token operated locks.
- See page 6 for details.

### MFC Wood Grain Finishes



Beech Light Oak Birch



Maple Ash Cherry



### Single-Door

#### Internal fittings:

- Fixed top shelf.
- Fixed garment hanging rail (except 300mm deep).
- Two coat hooks.



### Two-Door

#### Internal fittings:

- One intermediate fixed shelf.
- Each compartment has a fixed garment hanging rail.
- Each compartment has two coat hooks.



### Four-Door

#### Internal fittings:

- Three intermediate fixed shelves.

# Aluminium Laminate Door Lockers

Lockers are designed to provide cost-effective 'wet-area' personal storage solutions in leisure and sports facilities.

Withstanding humid atmospheres, these lockers have a superb finish to suit any architectural design.

- Lockers have clean lines and continuous colour across the changing area.
  - 1800mm lockers available as 1, 2, 4 or 2 door above 2 quarter height doors and visa versa.
  - 900mm high lockers available as 1 or 2 doors.
  - Concealed hinges bolted to doors and frames.
  - Single-piece body for easy internal cleaning and snag-free storage of clothes and personal belongings.
  - Robust aluminium shelves riveted through the body for additional strength.
  - 95° custom-designed hinge.
  - Maximum clear access into locker width due to the compact design of frame uprights.
  - Gentle integral return spring on doors to avoid trapping hands or fingers; Doors have rounded, bull nose safe edges.
  - Integral double coat hook and hanging rail.
  - Choice of finishes, see page 17.
  - Fitted with Deadlock as standard.
    - Optional locks.
      - Digital combination lock.
      - Coin/token operated locks.
- See page 6 for details.



Height - 900 or 1800mm	
Widths mm	Depths mm
300	450
380	500



# Seating & Benching



## Bench seating and accessories

An essential element of all changing facilities, our bench and seating range is available to meet all your needs from mild or stainless steel frames to solid wood, composite or solid grade laminate slats.

You can choose from:

- Free-standing benches
- Wall-mounted back rest and clothes hook boards
- Single or double-sided free standing seat units with back rest & hook board
- Cantilever wall bench
- Locker support frames with integral seating



## Support Frame with Seat

Seat units are incorporated into the locker frame as well as slatted seats to the front. They can also include a mesh shelf for footwear. Seats are a standard depth of 300, 400 or 450mm and standard height is 400mm to match freestanding bench seating units.

# Standard Cupboards



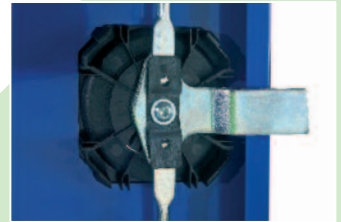
A versatile and robust range of steel cupboards providing secure storage in the workplace.

Cupboards meet the stringent requirements of BS EN 14073:2004 (Parts 1, 2 & 3) and BS EN 14074:2004. Cupboards feature:

- Door vertical stiffening for added strength
- Adjustable shelves on a 25mm vertical pitch
- Shelves carry a maximum of 78kg UDL
- Choice of door colours, see page 5



Handle designed for easier operation, allows door closing without the key



Three point locking as standard

<b>Height - 984 or 1820mm</b>	
<b>Width mm</b>	<b>Depth mm</b>
915	505

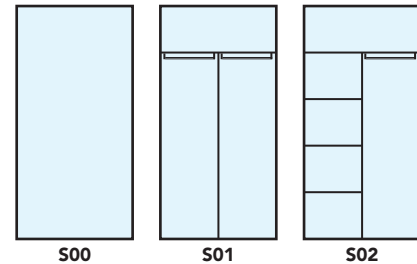
# Security Cupboards



Where valuable and potentially vulnerable materials or equipment are used in the workplace, the need for storage equipment with enhanced security becomes a necessity. Security cupboards benefit from an additional hasp and staple fitting for use with a padlock (not supplied) as well as the standard 3 point locking.

### Internal Layouts

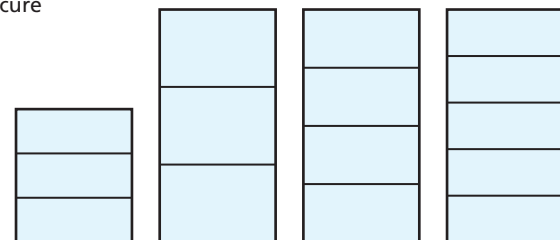
Standard, Security, Slimline, Large Volume and Vision cupboards are all available in the internal configurations shown right. These offer a range of solutions to meet the need for secure storage around the workplace.



S00

S01

S02



S12

S13

S14

S14

<b>Height - 984 or 1820mm</b>	
<b>Width mm</b>	<b>Depth mm</b>
915	505

# Slimline Cupboards

The practical solution where storage space is limited  
Slimline cupboards provide secure storage in a compact 'footprint'.

With the same all-steel design and features of standard cupboards, Slimlines are available with various internal configurations.

- Door vertical stiffening for added strength
- Adjustable shelves on a 25mm vertical pitch
- Shelves carry a maximum of 78kg UDL
- Choice of door colours, see page 5



Height - 1820mm	
Width mm	Depth mm
615	505

# Large Volume Cupboards

Spacious storage of larger items in the workplace

Large Volume Cupboards are available with various internal configurations and feature the following

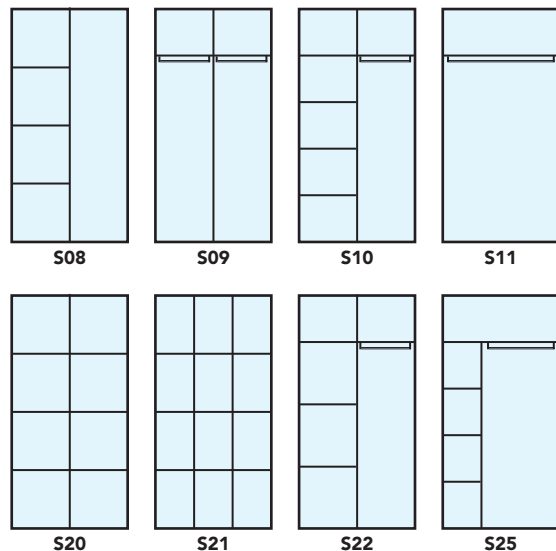
- Semi-concealed hinges
- Magnetic door catches
- Door vertical stiffening for added strength
- High quality lock operating 3-point locking bars
- Shelves supported on clips, height adjustable on 25mm increments
- Robust, all-steel construction
- Choice of door colours, see page 5



Large Volume Cupboards have a high quality metal lock operation the 3 point locking system



Height - 1829mm	
Width mm	Depth mm
1220	457



# Vision Cupboards

Lockers provide visible but secure storage suitable for most working environments to store tools, computer peripherals, electronic components and high value items.

Based on the standard all-steel cupboards, with the addition of toughened polycarbonate view panels set within a steel door which has an all-round strengthened edge.

- Semi-concealed hinges
- Magnetic door catches
- High quality lock operating 3-point locking bars
- Shelves supported on clips, height adjustable on 25mm increments
- Robust, all-steel construction
- Choice of door colours, see page 5



**Height - 1820mm**

Width mm	Depth mm
915	505



**Height - 984mm**

Width mm	Depth mm
915	505

# Storage Cupboards

A useful range of smaller, practically sized low cupboards designed for general storage uses.

- Door vertical stiffening for added strength
- Adjustable shelves on a 25mm vertical pitch
- Shelves carry a maximum of 78kg UDL
- Choice of BioCote door colours, see page 5

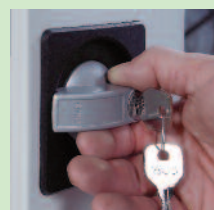


- Ronis deadlock operating single point locking
- 1 adjustable shelf

Height - 684mm	
Width mm	Depth mm
450	300

- 3 point locking
- 2 adjustable shelves

Height - 984mm	
Width mm	Depth mm
480	505



Handle designed for easier operation, allows door closing without the key.

- 3 point locking
- 2 adjustable shelves

Height - 984mm	
Width mm	Depth mm
915	505



# Tool Cabinets

Versatile tool cabinets in four overall sizes with various combinations of painted drawers and galvanised shelves.

All cabinets feature a secure barrel lock, operating a 3-point locking system.

- Door has vertical stiffening for added strength.
- Choice of door colours, see page 5.



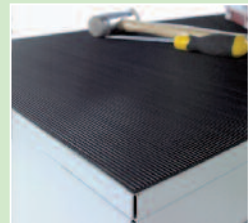
Extension drawers 90mm high with 25kg load capacity (evenly distributed). Safety stop allows extension up to 80%. Height adjustable in 25mm increments.



Shelves adjustable in 25mm increments. Safety stop allows extension up to 80%.



<b>Height - 1820mm</b>	
<b>Width mm</b>	<b>Depth mm</b>
915	505



Rubber mat fitted to top of all low cabinets.



Optional desk unit is available for low single cabinets.



Mobile chassis for use with low cabinets.



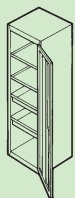
<b>Height - 984mm</b>	
<b>Width mm</b>	<b>Depth mm</b>
915	505



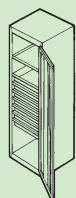
<b>Height - 984mm</b>	
<b>Width mm</b>	<b>Depth mm</b>
480	505



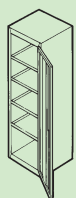
<b>Height - 1820mm</b>	
<b>Width mm</b>	<b>Depth mm</b>
480	505



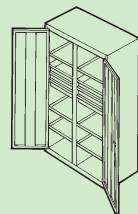
**C1661TGU--29S35**  
● 2 drawers, 2 shelves



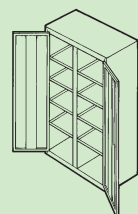
**C1661TGU--29S41**  
● 7 drawers, 1 shelf



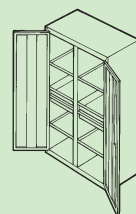
**C1661TGU--29S31**  
● 4 shelves



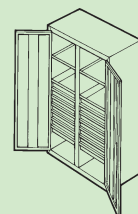
**C1961TGU--29S40**  
● 6 drawers, 6 shelves



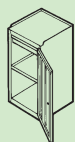
**C1961TGU--29S32**  
● 8 shelves



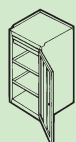
**C1961TGU--29S38**  
● 4 drawers, 4 shelves



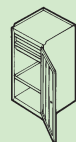
**C1961TGU--29S44**  
● 14 drawers, 2 shelves



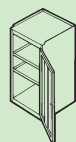
**CH661TGU--29S33**  
● 1 drawer, 1 shelf



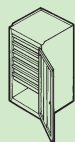
**CH661TGU--29S34**  
● 1 drawer, 2 shelves



**CH661TGU--29S45**  
● 2 drawers, 1 shelf



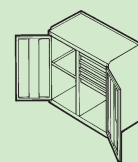
**CH661TGU--29S30**  
● 2 shelves



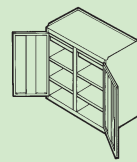
**CH661TGU--29S39**  
● 6 drawers



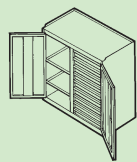
**CH661TGU--29S42**  
● 8 drawers



**CH961TGU--29S37**  
● 4 drawers, 1 shelf



**CH961TGU--29S36**  
● 2 drawers, 4 shelves



**CH961TGU--29S43**  
● 8 drawers, 2 shelves

# Hazardous Substance Cupboards

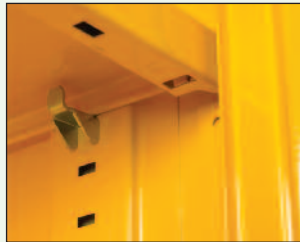
Independently Assessed to HSG51 and SR24 of the Health and Safety at Work legislation.

Hazardous substances should be locked away in a secure facility when not in use. Moresecure's substantial range of storage cabinets meet the regulatory requirements surrounding use of these materials.

- Designed to provide safe and secure storage of chemicals, paints and hazardous substances as defined by CoSHH guidelines.
- Independently assessed to conform to HSG51 and SR24.
- All steel construction for long life with low maintenance.

All hazardous substance storage cupboards have the following key features;

- Adjustable shelves to maximise space for stored material.
- Reinforced doors for added security.
- Fully welded integral sump to eliminate leakage and contain spillages up to 35ltrs (approx).
- Powder-coated paint finish with BioCote® protection for reduced risk of cross contamination.



- All units 790mm and above feature 3-point locking for additional security of the contents.
- Flush fitting handle for easier operation, eliminates risk of snagging when handling potentially hazardous substances.
- Door can be closed without the key being inserted on all 790mm plus units.
- Flush fitting handle for smaller cupboards under 770mm with Camlock as standard.



In the event of spillage within the cupboard, it is recommended the sump is initially emptied by means of an appropriate pump and the contents disposed of correctly in accordance with the relevant waste management regulations.



Supplied with four high visibility labels conforming to BS5609. Simply choose the right label for the type of substance being stored:

- Corrosive materials.
- Pesticides.
- Highly flammable.
- Harmful materials.



Labels are approved to the new HSE regulations and guidelines.



**H1661HYDYD29S13**

- Three shelves
- Three-point locking

Height - 1905mm	
Width mm	Depth mm
477	505



**H1961HYDYD29S13**

- Three shelves
- Three-point locking

Height - 1905mm	
Width mm	Depth mm
915	505



**HH661HYDYD29S11**

- One shelf
- Three-point locking

Height - 1070mm	
Width mm	Depth mm
477	505



**HH961HYDYD29S12**

- Two shelves
- Three-point locking

Height - 1070mm	
Width mm	Depth mm
915	505



**HA961HYDYD29S11**

- One shelf
- Three-point locking

Height - 790mm	
Width mm	Depth mm
915	505



**HA931HYDYD29S11**

- One shelf
- Three-point locking

Height - 790mm	
Width mm	Depth mm
915	355



**HA221HYDYD00S11**

- One shelf
- Single-point camlock

Height - 770mm	
Width mm	Depth mm
300	300



**HA521HYDYD00S11**

- One shelf
- Single-point camlock

Height - 770mm	
Width mm	Depth mm
450	300



**HA551HYDYD00S11**

- One shelf
- Single-point camlock

Height - 770mm	
Width mm	Depth mm
450	450



**HQ521HYDYD00S00**

- Single-point camlock with no shelf

Height - 595mm	
Width mm	Depth mm
450	300



**Pallet** racking



**Two-tier** shelving



**Heavy duty** shelving



**Mobile** shelving



**Mezzanine** floors



**Industrial** shelving



**Stockroom** shelving



**Small parts** storage



**Square tube**

